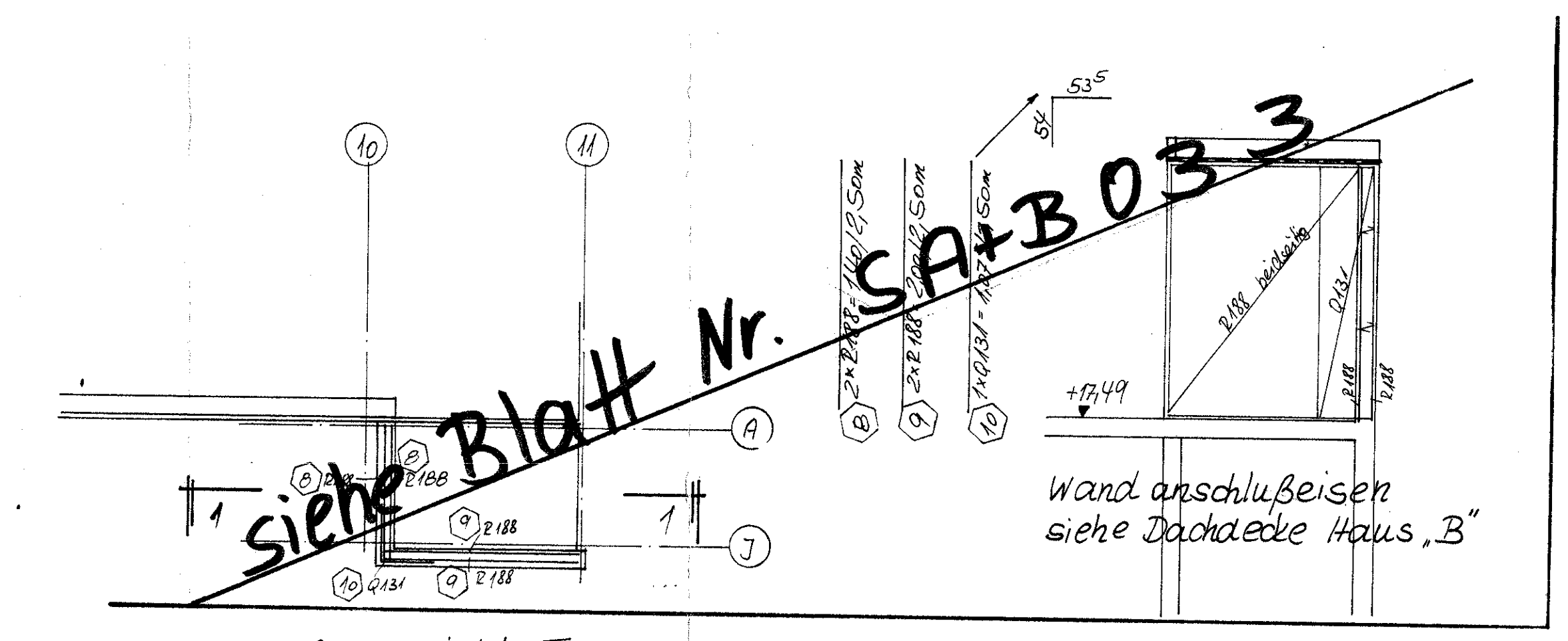


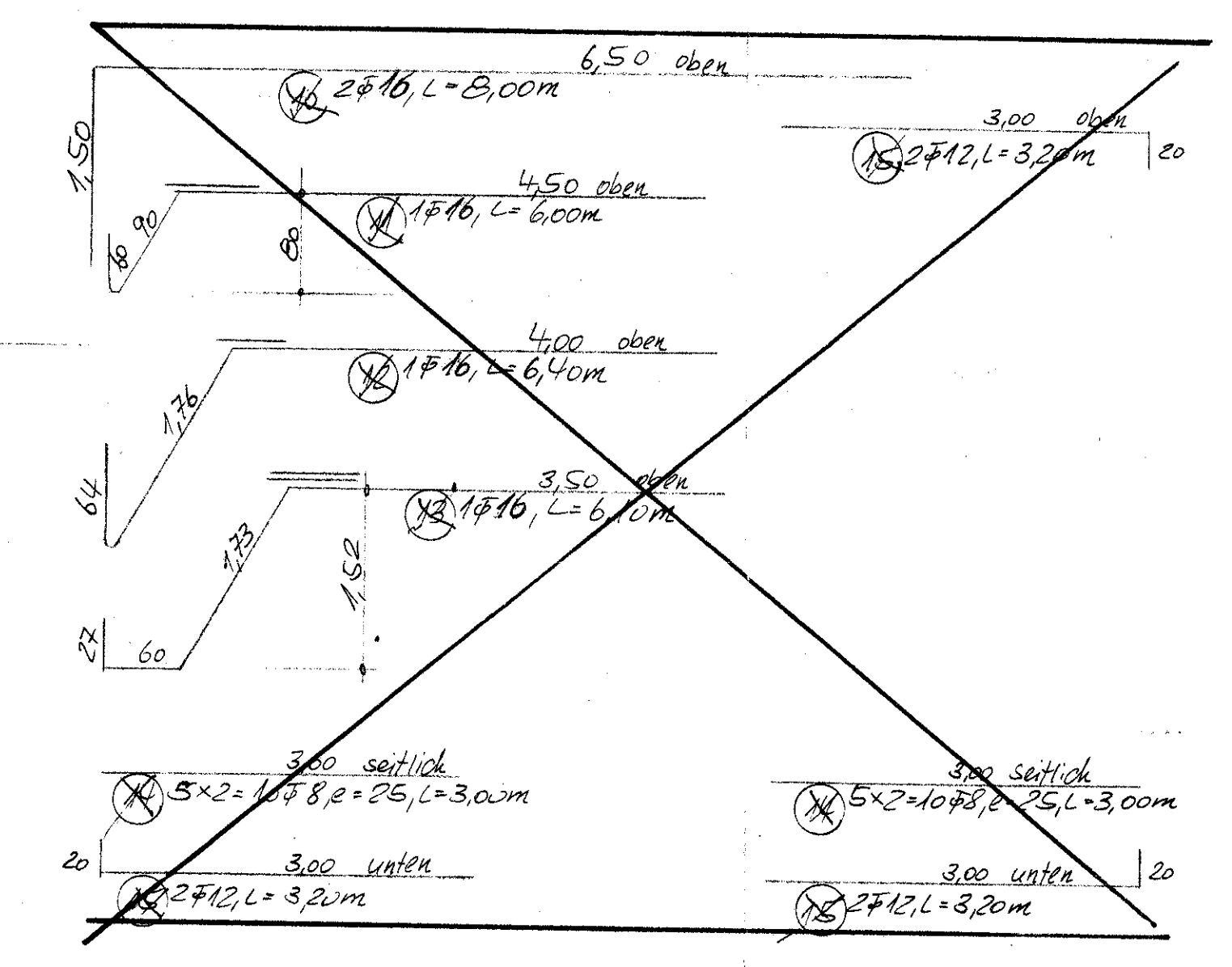
Wanddecke über Bauteil 3



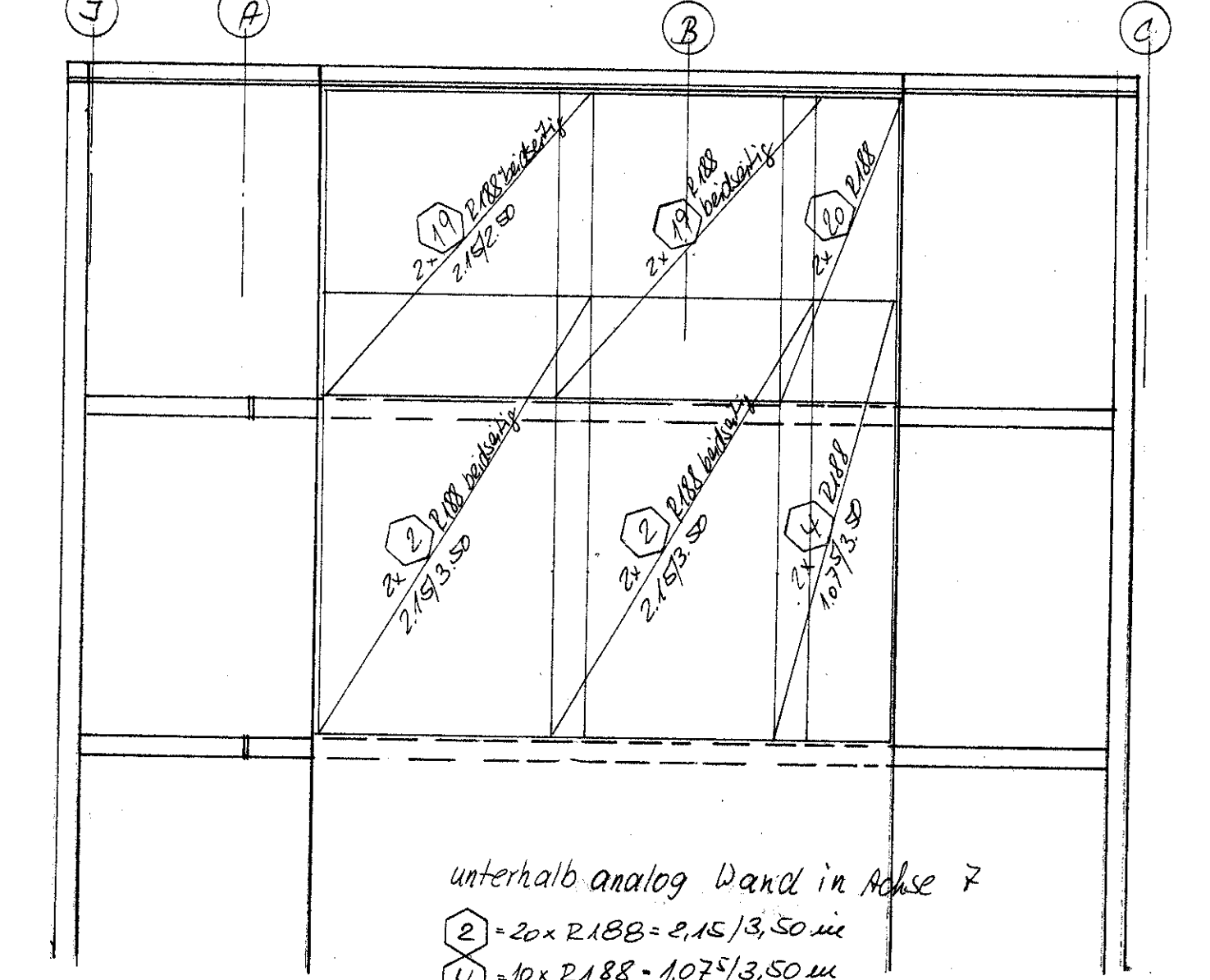
Außenansicht Treppenhauwand bei Achse A

Innenansicht Treppenhauwand bei Achse C

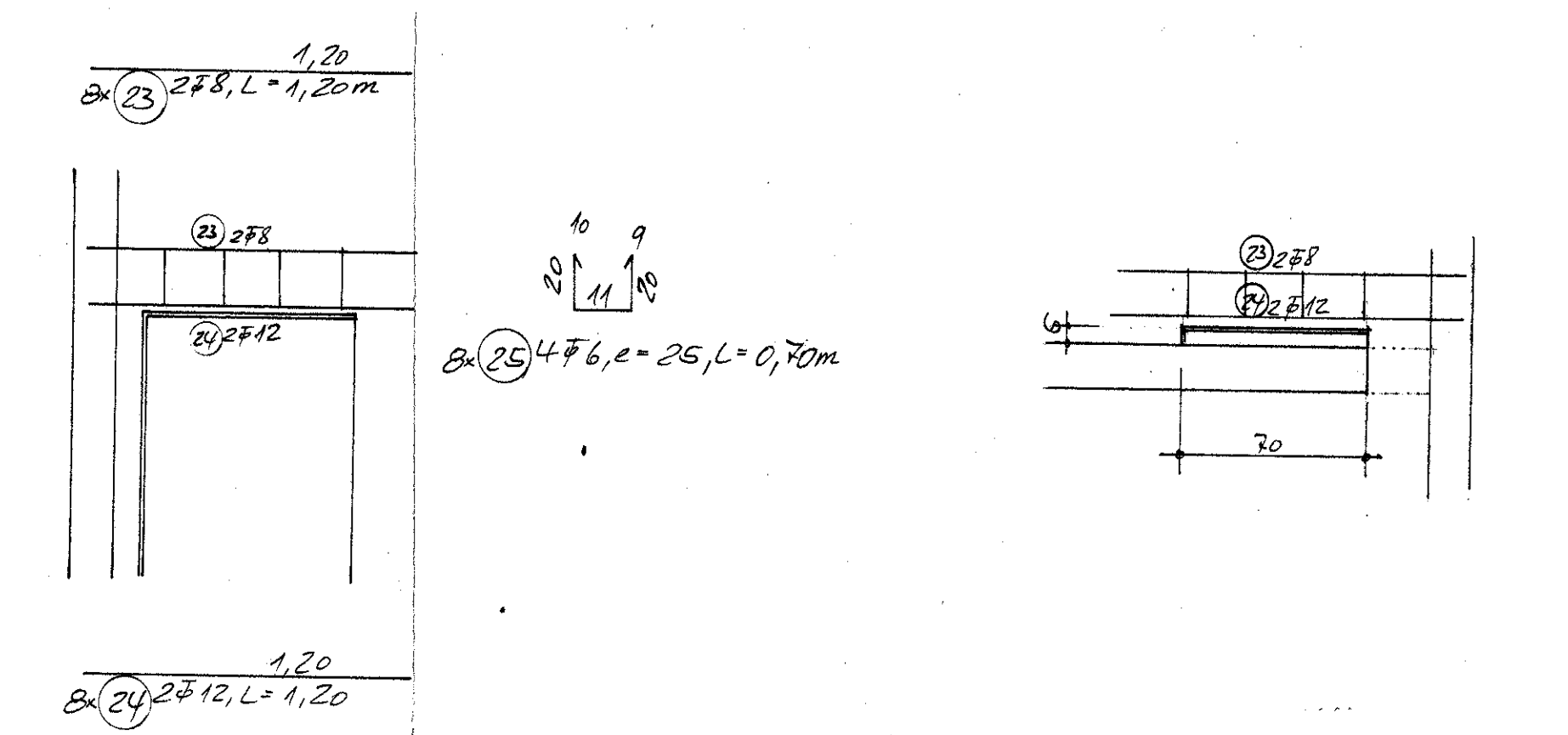
Treppenhauwand in Achse 7



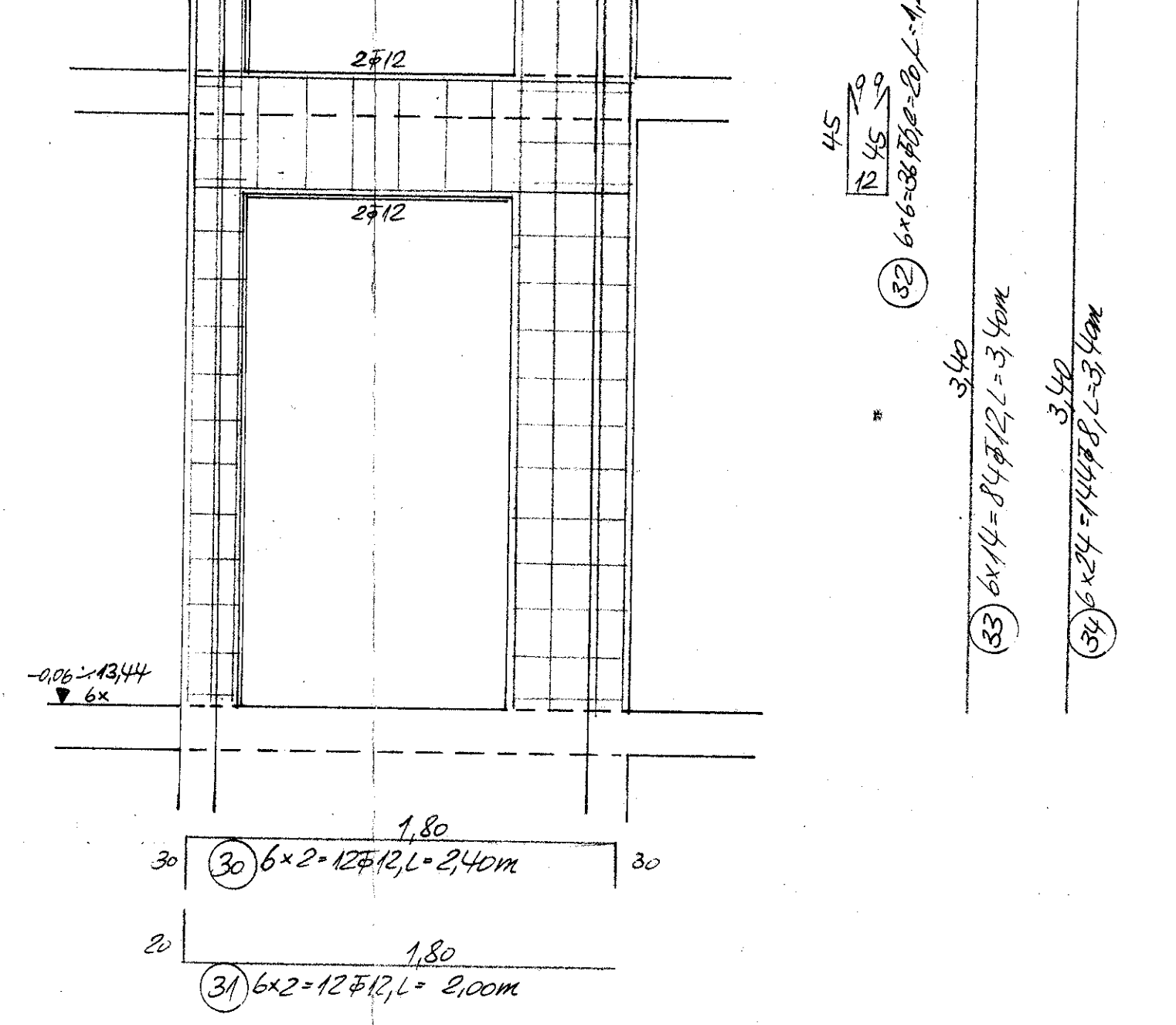
Treppenhauwand in Achse 11



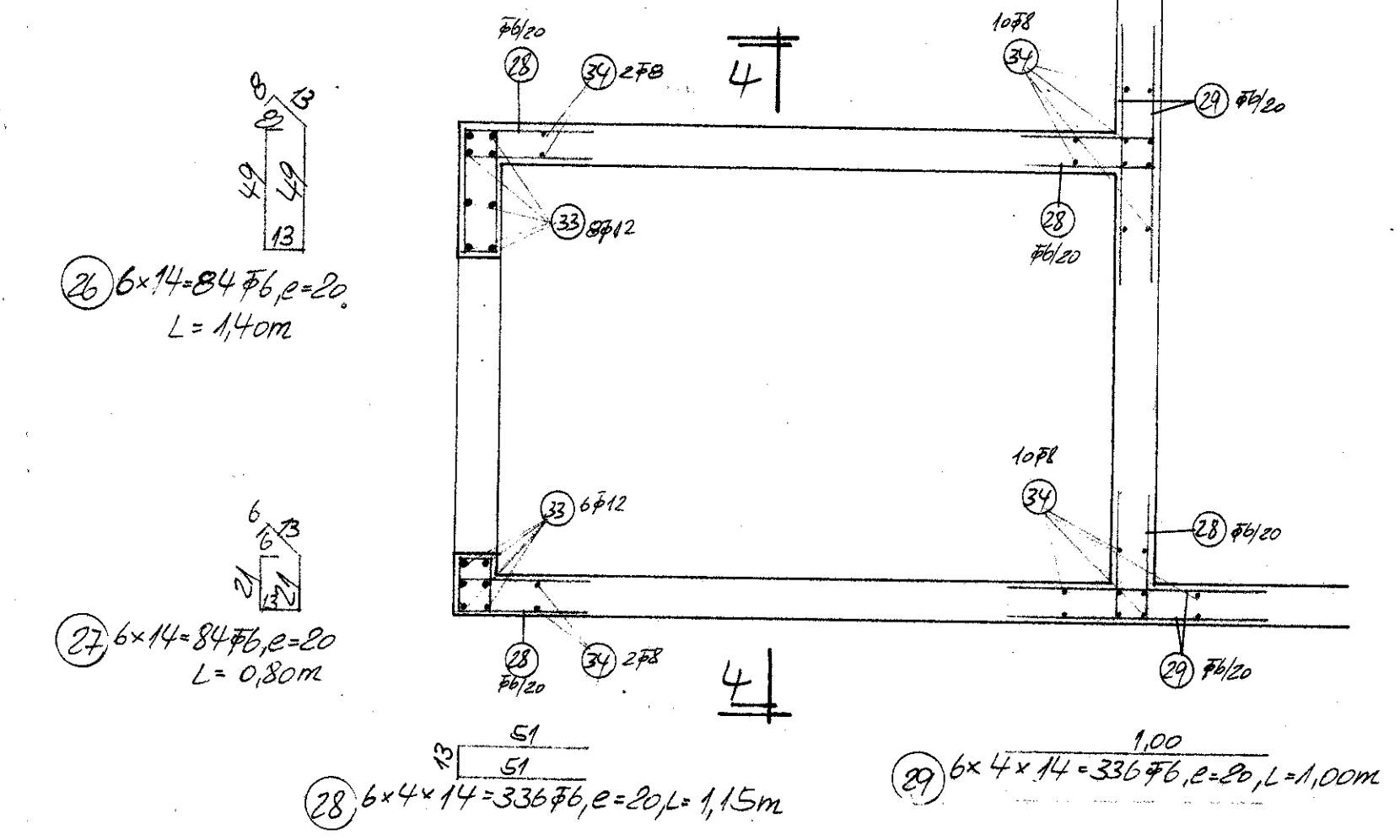
Türsturz im 6.0.G. = 2x H.1:25 Wanddurchbrüche in Achse 10 = 6x



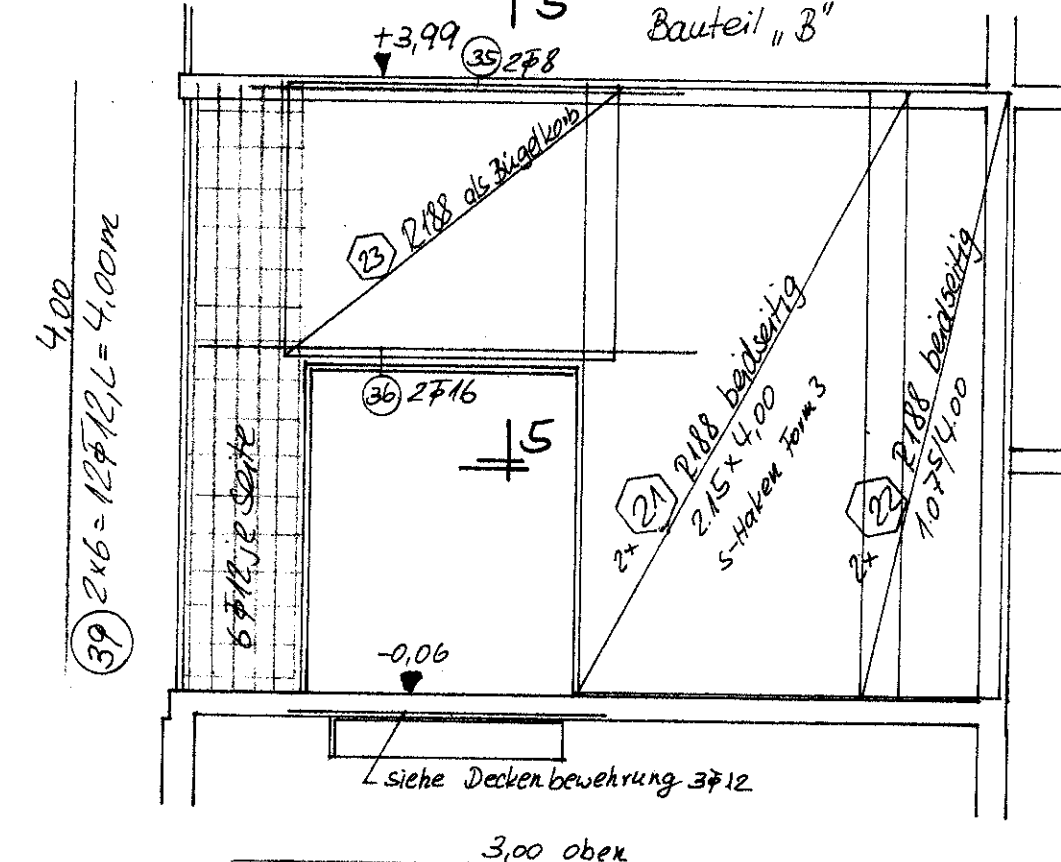
Schnitt 4-4



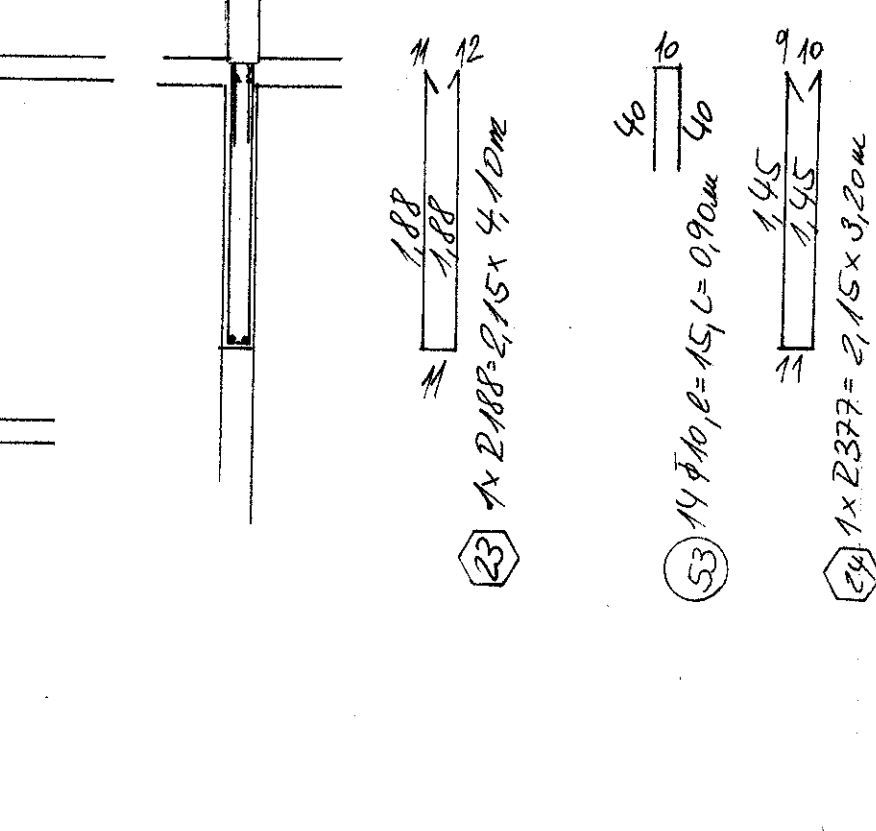
Bewehrung Aufzugschacht H.1:25



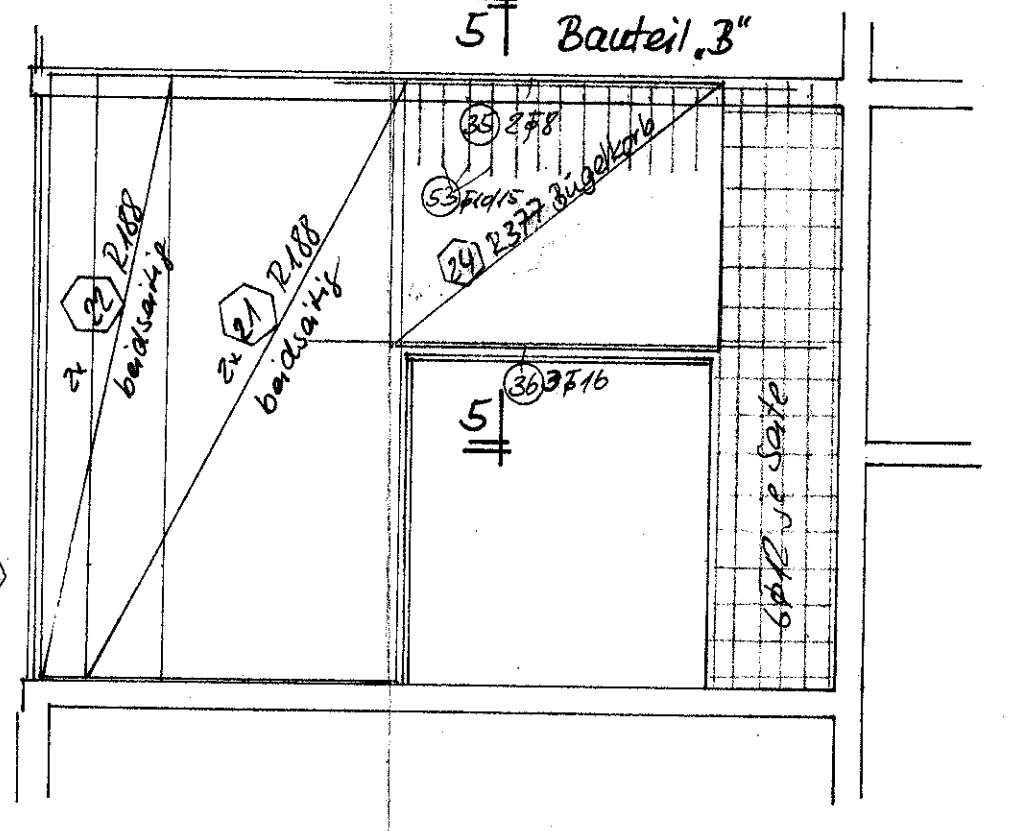
Wandbewehrung in Achse A



Schnitt 5-5

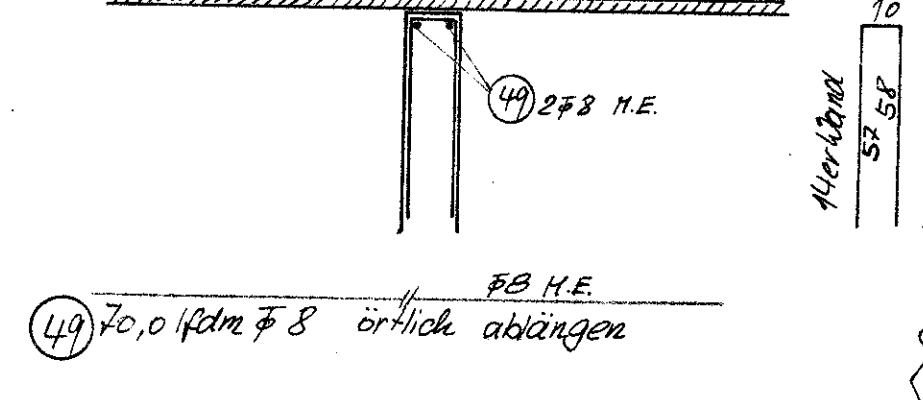


Wandbewehrung in Achse I



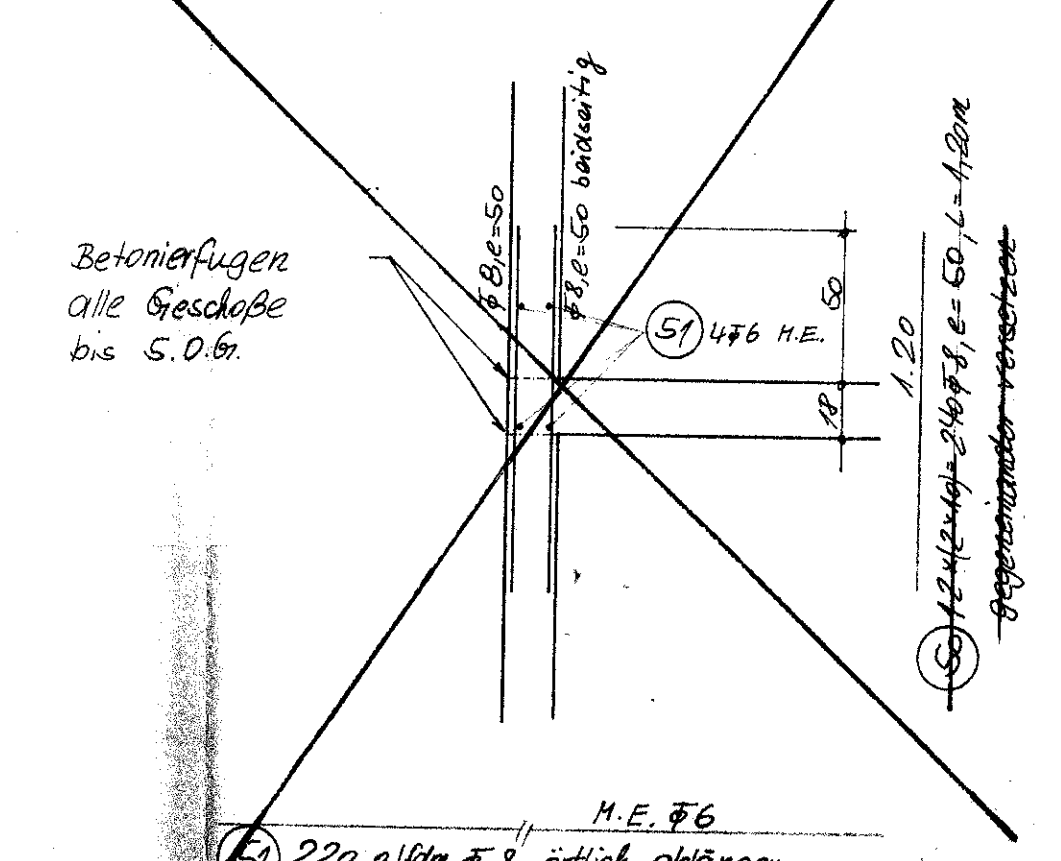
Bewehrung Wandkronen unter Dachdecke H.1:25

Gilt für alle Innen- u. Außenwände

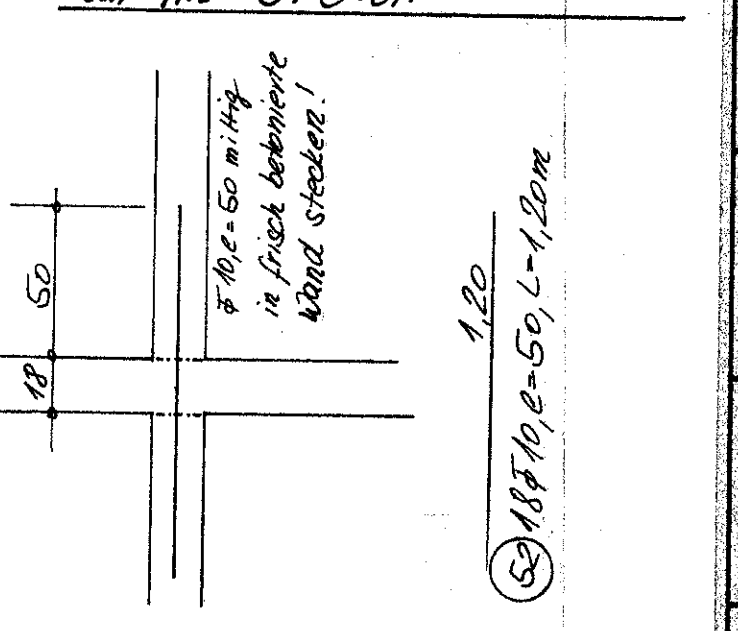


Anschlüsse in nicht bewehrte Wände H.1:25

Gebälde Achse 7 u. 11

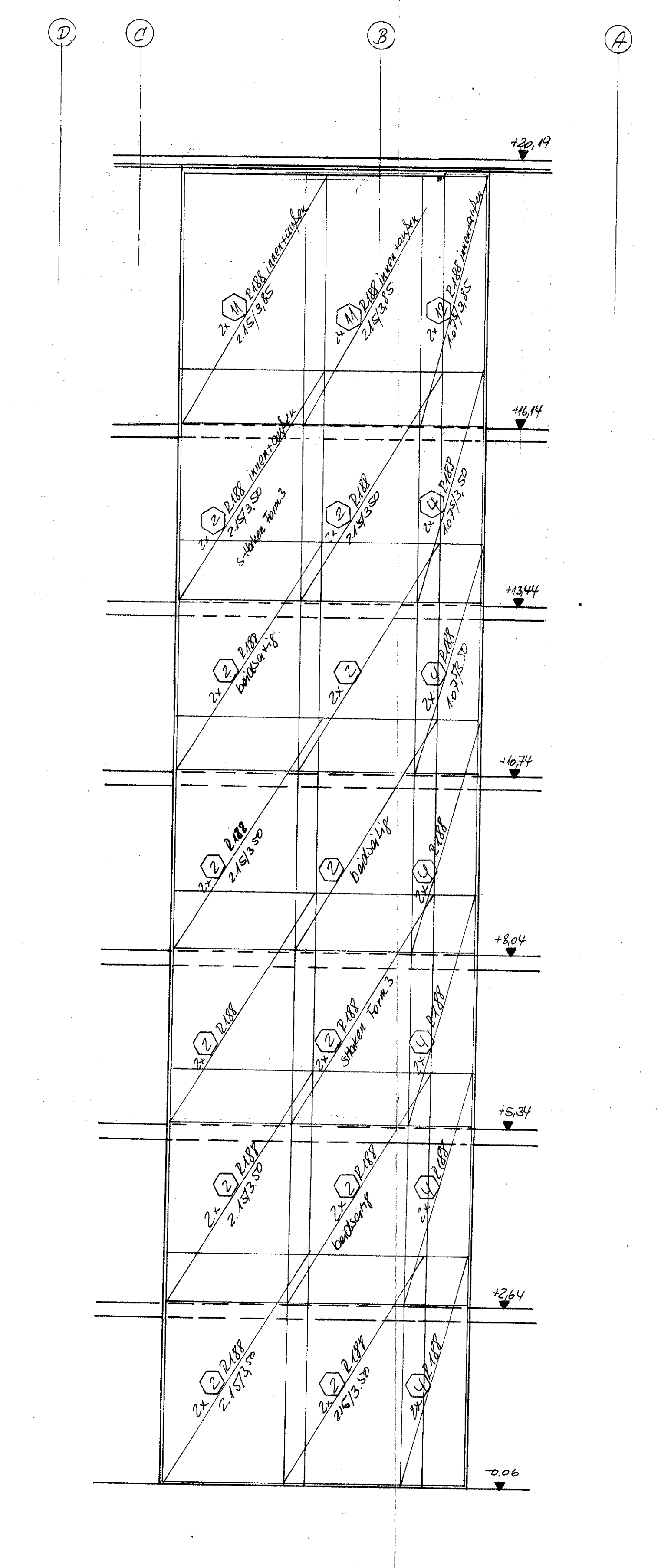
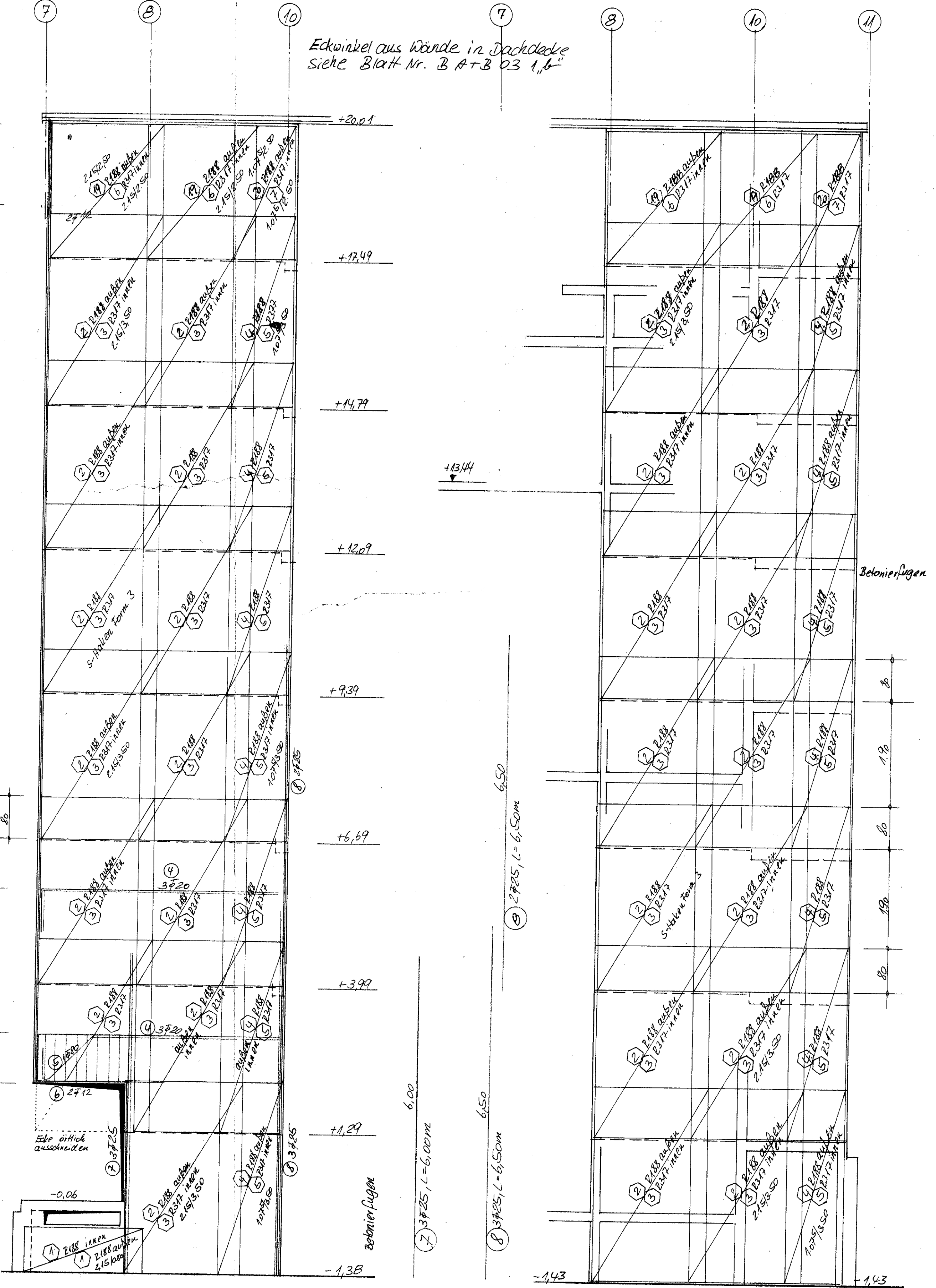


alle Innenwände außer Aufzugschacht zur im 6.0.G.



Brand-Wand in Achse B zwischen C u. B

wird beidseitig mit R188 bewehrt, je Geschoß 2 x 1/2 Matten um Ecke abgedmckt 27 Matten R188 = 2,15/3,50m



Die Obereintragung mit der Berechnung wurde geprüft
H.1:25 die Abmessungen in 7-7
2. Datum, das 1/12.7. 1973

EINGANG

Dipl.-Ing. W. Schülke
Profingenieur für Bauwesen
weg 22, August 1942 für die Fachrichtungen
Statik, Massivbau, Holz- u. Stahlbau
Dortmund-Geiselastraße 47

AUFTRAGGEBER RHEINISCH-WESTFÄLISCHE IMMOBILIENANLAGEGESELLSCHAFT KG, D-DORF TREUFINANZ, DÜSSELDORF BREITE STRASSE

VERTRETUNG

STATIK + KONSTRUKTION **HOCHTIEF AG-ESSEN**
ABT. KONSTRUKTIVER INGENIEURBAU

AUSFÜHRUNG ARGE STUDENTENWOHNHEIME MÜNSTER
HOCHTIEF AG J. OEVERMANN MÜNSTER

BAUWERK **STUDENTENWOHNHEIME MÜNSTER-ENSCHDEWEG HAUS A-E HAUS F-H**

BAUTEIL **Treppenhaus zwischen Haus A+B Bewehrung der Treppenhauwände**

BETONGÜTE B 30	ERGÄNZUNG	BL-GRÖSSE 20
STAHLGÜTE IV + II	1:25, 1:50	MASSTAB 1:50 ES
BETONDECKE 2,4 G4,5	1	GEZEICHNET von Schülke
STATIK GR. SEITE	3	DATUM 1/12.7.73
POSITION	4	GEPRÜFT
ZUGEHÖRIGE ZEICHNUNG	5	KONTO-NR. 02-30-813
	6	PROJEKT-NR. H-113 r
	7	BLATT-NR.
	8	B. 11+3 03 2

1) 1888 = 1888, L = 1,40m
 2) 1888 = 1888, L = 1,40m
 3) 1888 = 1888, L = 1,40m
 4) 1888 = 1888, L = 1,40m
 5) 1888 = 1888, L = 1,40m
 6) 1888 = 1888, L = 1,40m
 7) 1888 = 1888, L = 1,40m
 8) 1888 = 1888, L = 1,40m
 9) 1888 = 1888, L = 1,40m
 10) 1888 = 1888, L = 1,40m
 11) 1888 = 1888, L = 1,40m
 12) 1888 = 1888, L = 1,40m
 13) 1888 = 1888, L = 1,40m
 14) 1888 = 1888, L = 1,40m
 15) 1888 = 1888, L = 1,40m
 16) 1888 = 1888, L = 1,40m
 17) 1888 = 1888, L = 1,40m
 18) 1888 = 1888, L = 1,40m
 19) 1888 = 1888, L = 1,40m
 20) 1888 = 1888, L = 1,40m
 21) 1888 = 1888, L = 1,40m
 22) 1888 = 1888, L = 1,40m
 23) 1888 = 1888, L = 1,40m
 24) 1888 = 1888, L = 1,40m
 25) 1888 = 1888, L = 1,40m
 26) 1888 = 1888, L = 1,40m
 27) 1888 = 1888, L = 1,40m
 28) 1888 = 1888, L = 1,40m
 29) 1888 = 1888, L = 1,40m
 30) 1888 = 1888, L = 1,40m
 31) 1888 = 1888, L = 1,40m
 32) 1888 = 1888, L = 1,40m
 33) 1888 = 1888, L = 1,40m
 34) 1888 = 1888, L = 1,40m
 35) 1888 = 1888, L = 1,40m
 36) 1888 = 1888, L = 1,40m
 37) 1888 = 1888, L = 1,40m
 38) 1888 = 1888, L = 1,40m
 39) 1888 = 1888, L = 1,40m
 40) 1888 = 1888, L = 1,40m
 41) 1888 = 1888, L = 1,40m
 42) 1888 = 1888, L = 1,40m
 43) 1888 = 1888, L = 1,40m
 44) 1888 = 1888, L = 1,40m
 45) 1888 = 1888, L = 1,40m
 46) 1888 = 1888, L = 1,40m
 47) 1888 = 1888, L = 1,40m
 48) 1888 = 1888, L = 1,40m
 49) 1888 = 1888, L = 1,40m
 50) 1888 = 1888, L = 1,40m
 51) 1888 = 1888, L = 1,40m
 52) 1888 = 1888, L = 1,40m
 53) 1888 = 1888, L = 1,40m
 54) 1888 = 1888, L = 1,40m
 55) 1888 = 1888, L = 1,40m
 56) 1888 = 1888, L = 1,40m
 57) 1888 = 1888, L = 1,40m
 58) 1888 = 1888, L = 1,40m
 59) 1888 = 1888, L = 1,40m
 60) 1888 = 1888, L = 1,40m
 61) 1888 = 1888, L = 1,40m
 62) 1888 = 1888, L = 1,40m
 63) 1888 = 1888, L = 1,40m
 64) 1888 = 1888, L = 1,40m
 65) 1888 = 1888, L = 1,40m
 66) 1888 = 1888, L = 1,40m
 67) 1888 = 1888, L = 1,40m
 68) 1888 = 1888, L = 1,40m
 69) 1888 = 1888, L = 1,40m
 70) 1888 = 1888, L = 1,40m
 71) 1888 = 1888, L = 1,40m
 72) 1888 = 1888, L = 1,40m
 73) 1888 = 1888, L = 1,40m
 74) 1888 = 1888, L = 1,40m
 75) 1888 = 1888, L = 1,40m
 76) 1888 = 1888, L = 1,40m
 77) 1888 = 1888, L = 1,40m
 78) 1888 = 1888, L = 1,40m
 79) 1888 = 1888, L = 1,40m
 80) 1888 = 1888, L = 1,40m
 81) 1888 = 1888, L = 1,40m
 82) 1888 = 1888, L = 1,40m
 83) 1888 = 1888, L = 1,40m
 84) 1888 = 1888, L = 1,40m
 85) 1888 = 1888, L = 1,40m
 86) 1888 = 1888, L = 1,40m
 87) 1888 = 1888, L = 1,40m
 88) 1888 = 1888, L = 1,40m
 89) 1888 = 1888, L = 1,40m
 90) 1888 = 1888, L = 1,40m
 91) 1888 = 1888, L = 1,40m
 92) 1888 = 1888, L = 1,40m
 93) 1888 = 1888, L = 1,40m
 94) 1888 = 1888, L = 1,40m
 95) 1888 = 1888, L = 1,40m
 96) 1888 = 1888, L = 1,40m
 97) 1888 = 1888, L = 1,40m
 98) 1888 = 1888, L = 1,40m
 99) 1888 = 1888, L = 1,40m
 100) 1888 = 1888, L = 1,40m

